



**INDIGENOUS MAPPING
WORKSHOP**

#2022IMW


SPEAKERS & TRAINERS

NOVEMBER 21 -23, 2022

INDIGENOUSMAPS.COM

PLANNING COMMITTEE

PASSIONATE ABOUT MAPS



The Indigenous Mapping Workshop is organized annually by The Firelight Group and our strategic partners composed of GIS education specialists and Indigenous community partners. Many of the trainers you will meet over the next three days sit on our Planning Committee, which is responsible for responsible for all levels of event logistics, management, and curriculum development.

We are honoured and grateful to work with this amazing team to bring the Indigenous Mapping Workshop to life!

PLANNING COMMITTEE

THE FIRELIGHT GROUP



STEVE DEREYOY

DIRECTOR & FOUNDER OF IMW

Steve is Anishinabe/Saulteaux and a member of the Ebb and Flow First Nation from Manitoba. He is a Firelight director and GIS Program Director. Steve is a professional cartographer and geographic information systems (GIS) specialist, working with Indigenous groups internationally. He also established the Direct-to-Digital (D2D) mapping methodology and founded the annual Indigenous Mapping Workshops.



SABRINA FIELDS

COMMUNICATIONS COORDINATOR

Sabrina is the Communications Coordinator at The Firelight Group and one of the organizers of the Indigenous Mapping Workshop. Sabrina is passionate about storytelling as a means of community building. She has two years of experience working with Indigenous communities and organizations in Canada and beyond on communications initiatives. She is honoured to be a part of the Firelight team.



ALEXIS CASTLE

JUNIOR RESEARCHER

Alexis is Anishinaabe, Saulteaux and English and is a member of the Skownan First Nation. Alexis is a Researcher with the Firelight Group supporting the Traditional Knowledge and Use Study Team. She completed her Bachelors of Arts in Anthropology at the University of Victoria in 2020. She has been the Indigenous Mapping Workshop Coordinator since 2021.

PLANNING COMMITTEE

THE FIRELIGHT GROUP



EMILY KEANE
COMMUNICATIONS SPECIALIST

Emily is the Communications Intern at the Firelight Group. She graduated from the University of Guelph with a double major in International Development & History in 2017. Emily recently studied Graphic Design at Humber College, and is excited to use her educational background to support the work of the Firelight Group and the Indigenous Mapping Workshop.



DAKOTA SWIFTWOLFE
INDIGENOUS MAPPING WORKSHOP INTERN

Dakota is the IMW intern and has been supporting the committee with communication tasks. She is Nehiyawak/Ojibway and is a member of Moosomin First Nation from Saskatchewan, Treaty 6 territory. Dakota double-majored in First Peoples Studies & Women's Studies at Concordia University.

REINSTATING RELATIONSHIPS

BUILDING CONNECTIONS

TECHNOLOGY COMMITTEE



RALEIGH SEAMSTER

SENIOR PROGRAM MANAGER, GOOGLE EARTH OUTREACH

Raleigh was a member of the steering committee for the inaugural Indigenous Mapping Workshop in 2014 and is passionate about building a global network of Indigenous mappers. She has been at Google for 15 years and was born and raised on the traditional territory of the Piscataway and Anacostan peoples in Arlington, Virginia.



TARA RUSH

ADMIN BUSINESS PARTNER, GOOGLE CANADA

Tara is Kanien'kéha from Ahkwesáhsne & works at Google Canada as an Admin Business Partner. As part of the Google American Indian Network and Google's First Nations Group, her work on diversity at Google has focused solely on Indigenous work, including mapping, education, language, inclusion, and community outreach.



MARENA BRINKHURTS

COMMUNITY TEAM, MAPBOX

Marena supports collaborations between Mapbox and external partners interested in using Mapbox tools to further their efforts for positive social and environmental change. Marena holds a master's degree in natural resource management and planning from Simon Fraser University and a bachelor's degree in environmental sciences from the University of Guelph.



JONATHAN VAN DUSEN

HIGHER EDUCATION DEVELOPER/ANALYST, ESRI CANADA

Jonathan is a Higher Education Developer/Analyst as part of Esri Canada's Education and Research group. He is interested in the use of GIS for Traditional Knowledge, as well as in software usability and user experience, and is always inspired to learn how Indigenous communities are using mapping techniques for social and environmental sustainability.

TECHNOLOGY COMMITTEE



BRENT HALL

DIRECTOR, EDUCATION & RESEARCH, ESRI CANADA

Brent is the Director of Education and Research at Esri Canada. Prior to joining Esri Canada, Brent was Professor and Dean of Surveying at the University of Otago, New Zealand. He has published numerous articles & books and has also undertaken GIS projects in numerous countries, with a specific regional focus on Latin America & the Caribbean.



SUSIE SALIO

EDUCATION AND RESEARCH ANALYST, ESRI CANADA

Susie is an Education and Research GIS Analyst at Esri Canada, where she provides support for various teaching, learning, and research projects, facilitates workshops for both entry level and experienced GIS users, and works with different partner organizations to create meaningful maps and apps. Susie has a special interest in using GIS for community research, engagement, and development.



PABLO LISTINGART

EXECUTIVE DIRECTOR, COMIT

Pablo is the Executive Director at ComIT and also runs their Recoding Futures program with Google, which provides IT training to Indigenous learners across Canada. He teaches people to code using HTML, CSS and Javascript and is bringing coding to the Indigenous Mapping Workshop for the first time.



AMBER MCCULLUM

APPLIED SCIENTIST, NASA AMES RESEARCH CENTRE

Amber is a researcher and capacity building specialist in the Earth Science Division at NASA Ames Research Center. She is the lead for a project focused on web-based drought and agricultural tools being co-developed for the Navajo Nation, called the Drought Severity Evaluation Tool (DSET) and OpenET. She serves as the Impact and Transition Lead for NASA's Western Water Applications Office (WWAO).

TECHNOLOGY COMMITTEE



CINDY SCHMIDT

ASSOCIATE PROGRAM MANAGER, NASA ECOLOGICAL FORECASTING PROGRAM

Cindy is an Associate Program Manager for NASA's Applied Science Ecological Forecasting program and is also the lead for the Indigenous Peoples Pilot program with NASA's Capacity Building program. She has over 25 years of experience in using remote sensing and GIS technology. She holds a PhD from UC Santa Cruz in Environmental Studies.



GUY AUBÉ

PROJECT OFFICER - EARTH OBSERVATION APPLICATIONS AND UTILIZATIONS, CANADIAN SPACE AGENCY

Guy is the Project Officer of Earth Observation Applications and Utilizations at the Canadian Space Agency. He and his team are bringing remote-sensing training to the Indigenous Mapping Workshop along with NASA.



DIRK WERLE

EARTH OBSERVATION/REMOTE SENSING, CANADIAN SPACE AGENCY

Dirk works in remote-sensing and Earth observation at the Canadian Space Agency. He and his team are bringing remote-sensing training to the Indigenous Mapping Workshop along with NASA.



ANDREW MILLER

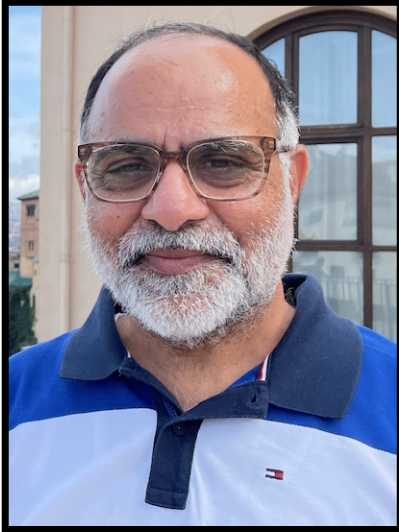
ASSOCIATE PROFESSOR, FNUNI



FRANK HORN

INDIGENOUS COLLABORATION, ROGERS

KEYNOTE SPEAKERS



OPENING KEYNOTE:

DR. ABDUL RAOUF

Research Chair, Ph.D

Dr. Abdul Raouf has 30+ years of post Ph.D. experience, and has worked for prestigious space research organizations, such as the European Space Agency. He has worked with Saskatchewan Polytechnic since 2014 and actively works with First Nations communities by creating digital maps of their lands to facilitate their work & first responders.



CLOSING KEYNOTE

ANDREW DOWDING

Managing Director, Winyama

Andrew co-founded Winyama in 2018 to provide more opportunity for Indigenous people to work in the geospatial industry. His major professional roles have been in the fields of Native Title, ethnographic heritage survey, and, most recently, Indigenous mapping. Andrew's passion is Indigenous mapping & the use of technology for cultural safeguarding.

PANEL 1



ALYCIA DE MESA

ASSISTANT DIRECTOR OF
DIGITAL EQUITY & SOCIAL
IMPACT



EVELYNN COMBS

CULTURAL RESOURCE
MANAGER & VICE
PRESIDENT, HEALY LAKE
VILLAGE



GERAD SMITH

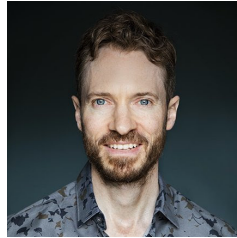
ASSOCIATE RESEARCHER,
UNIVERSITY OF ALASKA
FAIRBANKS

PANEL 2



BRIAN POPE

FOUNDER AND EXECUTIVE
DIRECTOR,
THE ARC/K PROJECT



SCOTT PURDY

DIRECTOR OF OPERATIONS,
THE ARC/K PROJECT



ZACKARY KING

GEOSPATIAL ANALYST,
DOIG RIVER FIRST NATION

PANEL 3



LEEANNA RHODES

GIS SPECIALIST, FIRST NATIONS
LAND MANAGEMENT
RESOURCE CENTRE INC.



STEFANIE RECOLLET

SOLID WASTE SPECIALIST, FIRST
NATION LAND MANAGEMENT
RESOURCE CENTRE



ADAM WRIGHT

LAND CODE GOVERNANCE
PLANNER, FIRST NATIONS
LAND MANAGEMENT
RESOURCE CENTRE.

LIGHTNING ROUND 1



NOREEN DEMERIA

MANAGER INDIGENOUS
YOUTH IN STEM PROGRAM,
ACTUA



ERIN MCGREGOR

CENTRAL CONSULTATION &
HARVESTING COORDINATOR, METIS
SETTLEMENTS GENERAL COUNCIL



HOLLY FLEMING

SENIOR RESEARCH ASSISTANT,
NORTHERN ONTARIO SCHOOL
OF MEDICINE UNIVERSITY

PRESENTATION TOPICS:

Erin: Mapping Metis Genealogies

Holly: Using emotions to map Indigenous cartography: The Story of Canoe River

Noreen: Actua InSTEM: Indigenous People have Always known about STEM

LIGHTNING ROUND 2



ZORAN STANOJEVIC

SENIOR GIS ANALYST, SOLSTICE
ENVIRONMENTAL MANAGEMENT



TALISHA CHAPUT

PROGRAM COORDINATOR, INSTITUTE OF
PRAIRIE AND INDIGENOUS ARCHAEOLOGY

PRESENTATION TOPICS:

Zoran: Human Footprint-Landscape Change Analysis

Talisha: GIS for Unmarked Graves Investigations: Communication,
Connection, Landscape, and Story

SPEAKERS & TRAINERS



KRISTA BENSON

PHOTOGRAMMETRY
SUPERVISOR, THE ARC/K
PROJECT



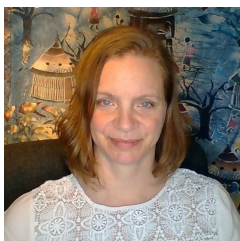
KRISTEN VELLINGER

RETENTION & PROGRESSION
CONSULTANT, GOOGLE EQUITY
PROGRAMS



CYNTHIA ANNETT

RESEARCH ASSOCIATE
PROFESSOR, KANSAS STATE
UNIVERSITY



CHARLENE NIELSON

CERTIFIED ARCGIS INSTRUCTOR,
ESRI CANADA



BECKY SEGAL

SIKU COORDINATOR &
REMOTE SENSING SPECIALIST



PANO SKRIVANOS

SENIOR MANAGER, GIS AND
INFORMATION MANAGEMENT
PROGRAM



NISHA COCHRAN

COMMUNITY PLANNER,
AUBIN CONSULTING



CAITLYN DUCANSON

PLANNING/ENGAGEMENT INTERN,
AUBIN CONSULTING



GIDO LANGEN

SURVEYOR GENERAL BRANCH,
NATURAL RESOURCES CANADA

SPEAKERS & TRAINERS



CATHERINE BAXENDALE,

JUNIOR RESEARCHER
THE FIRELIGHT GROUP



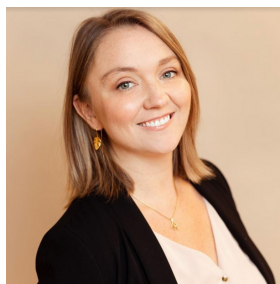
RYLAN O'KRANE

JUNIOR RESEARCHER
THE FIRELIGHT GROUP



JOCELYNN PROULX

INDIGENOUS ENGAGEMENT POLICY ANALYST,
CANADA CENTRE FOR MAPPING AND EARTH
OBSERVATION



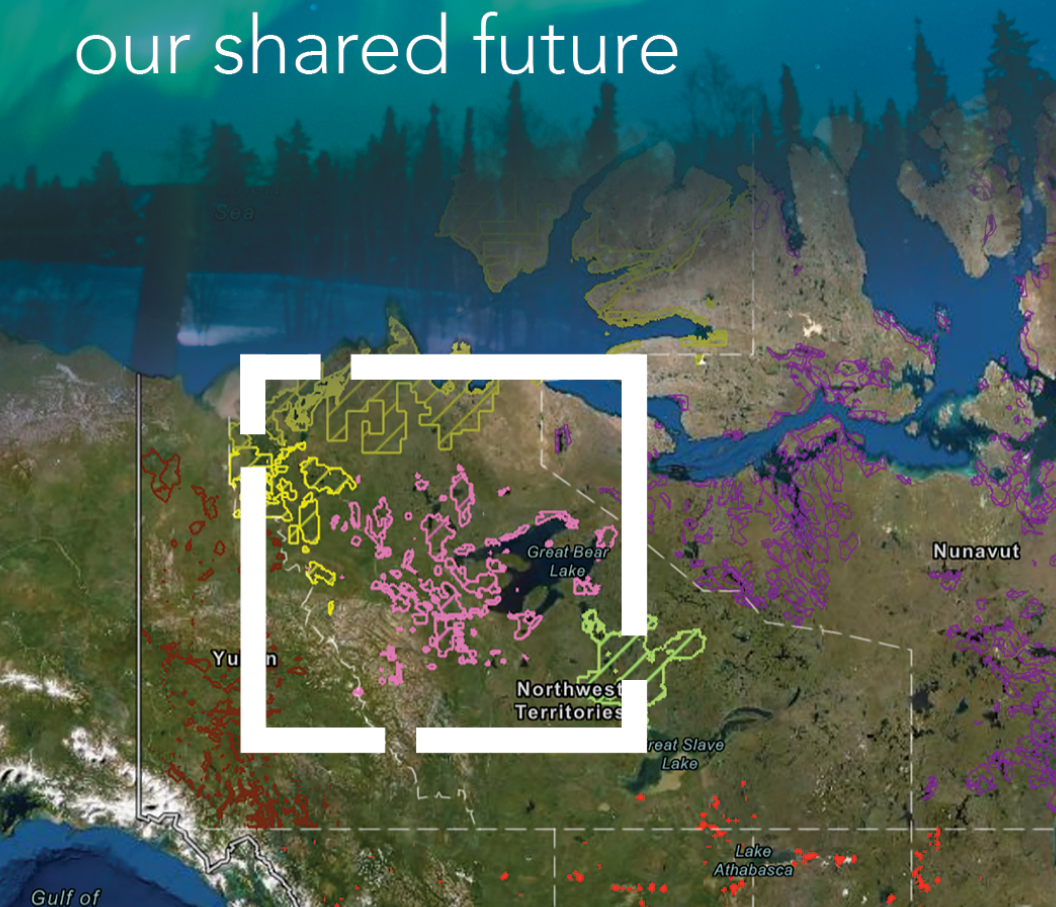
CHLOE BOONE

GEOMATICS OFFICER, NRCAN'S FLOOD HAZARD
IDENTIFICATION AND MAPPING PROGRAM'S
(FHIMP'S) INDIGENOUS ENGAGEMENT TEAM

**Thank you to everyone for sharing your
knowledge & experience at 2022IMW!**

CONNECTING COMMUNITIES

for the benefit of
our shared future



Join & chat with Esri Canada staff on the
Indigenous Mapping Collective at
indigenous-maps.mn.co



Google Earth Outreach empowers you to create positive change for people and the planet with Geo tools.



Google Earth

Explore, annotate and visualize data on top of a vast archive of satellite and aerial imagery of our planet.

earth.google.com/about



Google Earth Studio

Build video flyovers and animations using Google Earth's satellite and aerial imagery.

google.com/earth/studio



Google My Maps

Create interactive and collaborative maps on the web.

mymaps.google.com



Google Earth Engine

Analyze earth observation data from a planetary scale.

earthengine.google.com



Google Maps Platform

Code your infinitely customizable website with Google Maps Platform.

mapsplatform.google.com/

NASA's Indigenous Peoples Initiative



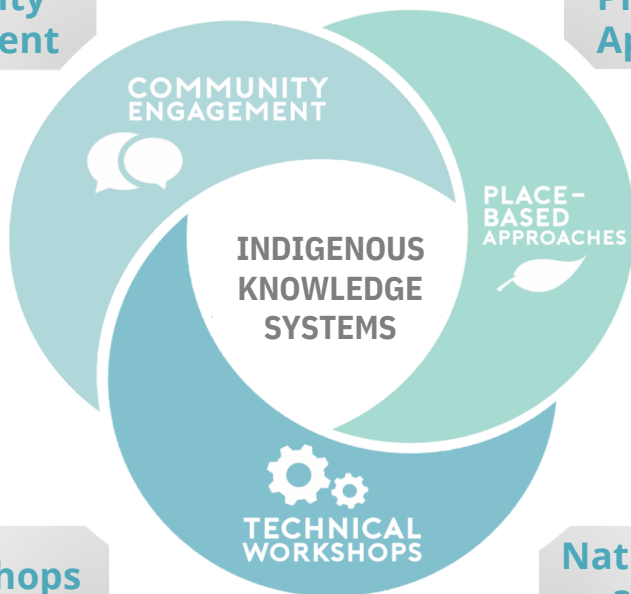
Engage. Empower. Train.

National Aeronautics and Space Administration

NASA's Capacity Building Program (CBP) aims to empower communities to use NASA Earth Observations for environmental decision-making. The Indigenous Peoples Initiative engages with Indigenous communities to foster ethical and culturally relevant space for the use of Earth observations in monitoring, mapping, and managing natural and cultural resources.

Community Engagement

Place-based Approaches



Workshops

Native Voices at NASA



Amber Jean McCullum



Sativa Cruz



Cindy Schmidt



Nikki Tulley

IPI website: <https://appliedsciences.nasa.gov/indigenous-peoples-pilot>



Mapbox is proud to support the Indigenous Mapping Collective as a partner in the vibrant global mapping ecosystem. Learn more about Mapbox and how to build with precise location data and powerful developer tools for mapping and navigation at:

mapbox.com

And we invite you to join us for our first ever 'BUILD with Mapbox' virtual event:

BUILD WITH
 **mapbox**

DECEMBER 1 • 10AM – 12PM PST

USING LOCATION
TO ILLUMINATE
AND INSPIRE

Be inspired, connect with the best map developers in the world, and learn about the latest updates from Mapbox - including new resources for the Mapbox developer community!

Register at mapbox.com/build



**INDIGENOUS MAPPING
WORKSHOP**

“

FOR FAR TOO LONG
INDIGENOUS
PEOPLES HAVE
BEEN EXCLUDED
FROM THE MAP.
WE'RE CHANGING
THAT.

”

STEVE DEROY
FOUNDER, IMW

